

HAME

POWER BANK PRODUCT COLLECTION

Hame Technology Co., Limited

Add: BLDG#A, Changfang Industrial Park, NO.2 Guihua 5th Road, Pingshan

New District, Shenzhen 518118, Guang dong, China

Tel: 86-755-28398778 Fax: 86-755-28398779

Headquarters Email: market@hametech.com

America E-mail: america@hametech.com

Europe E-mail: europe@hametech.com

Asia E-mail: asia@hametech.com

Web: www.hametech.com



Official Website

ABOUT US

OUR STORY

After a decade of working at and researching on the energy storage industry, in the spring of 2009, our founder, Peter Yang, set out with a vision of creating a cleaner energy storage product that would seamlessly integrate into everyone's life. Starting with the power bank products in 2010, HAME reached the sales of 18 million units of power banks and partnered up with Mophie, Belkin, Best-Buy and Walmart in the United States, and Varta, Lidl, Hama in Europe. We are now embarking on a new journey and will be dedicating to build up a whole line of power storage products for adventurers and all kinds of off-grid lives.

COMMITMENT TO PRODUCT

HAME is and always will prioritize design, service and quality over everything else. One of the most important aspects to us when designing new products is that we use the highest quality, longest-lasting materials available. With a team of 200 engineers and scientists, we design all of our products from the ground up, rather white-labeling existing products. From BMS motherboard to MPPT controller and inverters, we always choose the best design and materials that stand out and outlast.

EMBARKING ON THE NEW JOURNEY

Stepping into the second decade of our company, we have two factories in Xiangxi prefecture of western Hunan province. Our annual cell battery production capacity could reach 5GWh, supplying our 1 million units of portable energy storage products and 300,000 units of home energy storage products. Our headquarter, based in Shenzhen along with three other subsidiary companies, the Hame Group has over 1200 employees. Everything started with a simple idea, whatever HAME does, we always do it to our best and with same dedication like we had on the first day when we embark on the road. We have gotten a tad bigger, but we never forget to remain true and loyal to our clients and customers, from China to USA, from phone-users to outdoor adventurers!



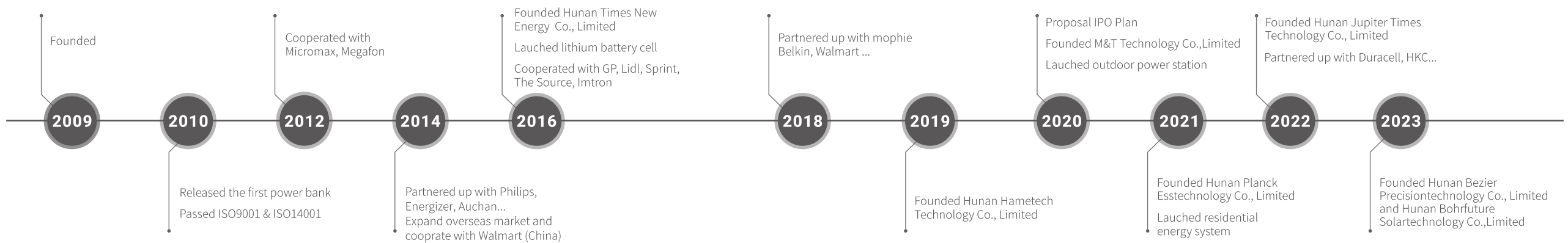
Battery Manufacture Base



Portable Power Manufacture Base



Energy Storage Manufacture Base



PORTABLE POWER BANK

TYPE-C OUTPUT 20W MAX



P248D

SPECS

Model: P248D

Type-C*2

Capacity: 5000mAh/3.7V/18.5Wh

Type-C Input: 5V/3A, 9/2A, 12V/1.5A

Type-C Output: 5V/3A, 9/2.22A, 12V/1.67A

Output: 15W (Total Max)

Dimensions: 75*36.5*26mm

Weight: 110±10g

PD ⚡ **3.0**  Qualcomm
quick charge 3.0

ENTRY LEVEL POWER BANK SERIES

5000mAh / 10000mAh / 20000mAh



P249A / P264A



P250A / P265A



P252A / P267A

SPECS

Model: P249A
Type-C*1, USB-A*1
Capacity: 5000mAh/3.7V/18.5Wh
Type-C Input: 5V/2.4A
Type-C Output: 5V/2.4A
USB-A Output: 5V/2.4A
Output: 12W (Total Max)
Dimensions: 95*60*15mm
Weight: 130g±10g

Model: P250A
Type-C*1, USB-A*1
Capacity: 10000mAh/3.7V/37Wh
Type-C Input: 5V/3A
Type-C Output: 5V/3A
USB-A Output: 5V/3A
Output: 15W (Total Max)
Dimensions: 95*65*27.6mm
Weight: 230g±10g

Model: P252A
Type-C*1, USB-A*1
Capacity: 20000mAh/3.7V/74Wh
Type-C Input: 5V/3A
Type-C Output: 5V/3A
USB-A Output: 5V/3A
Output: 15W (Total Max)
Dimensions: 140*70*27.6mm
Weight: 420g±10g

MAGSAFE COMPATIBLE POWER BANK WITH STAND

5000mAh



P246W5



SPECS

Model: P246W5
Type-C*1, Wireless*1
Capacity: 5000mAh/3.7V/18.5Wh
Type-C Input: 5V/2A, 9V/1.1A
Type-C Output: 5V/2.4A, 9V/1.33A, 12V/1A
Wireless Output: 5W/7.5W
Output: 12W (Total Max)
Dimensions: 94*65*14.8mm
Weight: 135g±10g



POWER BANK WITH BUILT-IN CABLE & MAGNET

5000mAh/10000mAh



P268D



Model: P268D
Type-C*2
Capacity: 5000mAh/3.7V/18.5Wh
Type-C 1 Input: 5V/3A, 9V/2A, 12V/1.5A
Type-C 1 Output: 5V/3A, 9V/2.22A, 12V/1.67A
Type-C cable Input: 5V/3A, 9V/2A, 12V/1.5A
Type-C cable Output: 5V/3A, 9V/2.22A, 12V/1.67A
Output: 15W (Total Max)
Dimensions: 92*66*14mm
Weight: 135g±10g



P269D

Model: P269D
Type-C*2
Capacity: 10000mAh/3.7V/37Wh
Type-C 1 Input: 5V/3A, 9V/2A, 12V/1.5A
Type-C 1 Output: 5V/3A, 9V/2.22A, 12V/1.67A
Type-C cable Input: 5V/3A, 9V/2A, 12V/1.5A
Type-C cable Output: 5V/3A, 9V/2.22A, 12V/1.67A
Output: 15W (Total Max)
Dimensions: 127*71*16mm
Weight: 235g±10g

POWER BANK WITH BUILT-IN AC PLUG

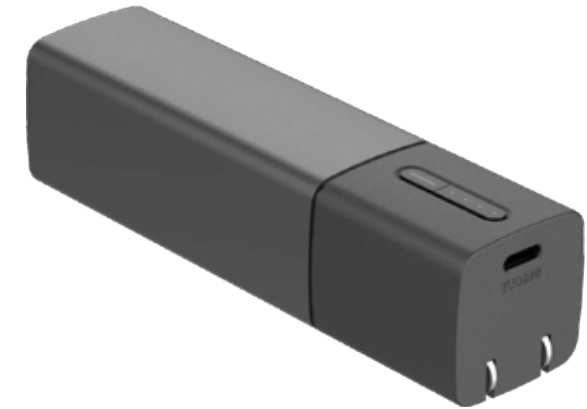
5000mAh / 10000mAh / 20000mAh



P281D



P280D



P279D

SPECS

Model: P279D
Type-C*1, AC*1
Capacity: 5000mAh/3.7V/18.5Wh
AC Input: 100~240V, 50/60Hz, 0.8A
Type-C Output: 5V/3A, 9V/2.22A, 12V/1.67A(20W Max)
Dimensions: 29*29*110mm
Weight: 140g±10g

Model: P280D
Type-C*1, USB-A*1, AC*1
Capacity: 10000mAh/3.7V/37Wh
AC Input: 100~240V, 50/60Hz, 0.8A
Type-C Output: 5V/3A, 9V/3A, 12V/2.5A, 15V/2A
USB-A Output: 5V/2.4A, 9V/2A, 12V/1.5A
Output: 15W (Total Max)
Dimensions: 29*46*110mm
Weight: 220g±10g

Model: P281D
Type-C*1, USB-A*1, AC*1
Capacity: 20000mAh/3.7V/74Wh
AC Input: 100~240V, 50/60Hz, 0.8A
Type-C Output: 5V/3A, 9V/3A, 12V/3A, 15V/3A, 20V/3.25A
USB-A Output: 5V/2.4A, 9V/3A, 12V/2.25A
Output: 27W (Total Max)
Dimensions: 46*46*120mm
Weight: 360g±10g

PD 20W & PD 100W 21700 POWER BANK SERIES

5000mAh / 10000mAh / 20000mAh / 25000mAh



P282D



P283D



P284D



P285D

SPECS

Model: P282D
Type-C*2, USB-A*1
Capacity: 5000mAh/3.7V/18.5Wh
Type-C Input: 5V/3A, 9V/2A, 12V/1.5A
Type-C Output: 5V/3A, 9V/2.22A, 12V/1.67A
USB-A Output: 5V/2.4A, 9V/2A, 12V/1.5A
Output: 15W (Total Max)
Dimensions: 25*88*35mm
Weight: 130±10g

Model: P283D
Type-C*2, USB-A*1
Capacity: 10000mAh/3.7V/37Wh
Type-C Input: 5V/3A, 9V/2A, 12V/1.5A
Type-C Output: 5V/3A, 9V/2.22A, 12V/1.67A
USB-A Output: 5V/2.4A, 9V/2A, 12V/1.5A
Output: 15W (Total Max)
Dimensions: 46*88*35mm
Weight: 210±10g

Model: P284D
Type-C*2, USB-A*1
Capacity: 20000mAh/3.7V/74Wh
Type-C Input: 5V/3A, 9V/2A, 12V/1.5A
Type-C Output: 5V/3A, 9V/2.22A, 12V/1.67A
USB-A Output: 5V/2.4A, 9V/2A, 12V/1.5A
Output: 15W (Total Max)
Dimensions: 46*160*38mm
Weight: 360±10g

Model: P285D
Type-C*2, USB-A*1
Capacity: 25000mAh/3.7V/92.5Wh
Type-C Input: 5V/3A, 9V/3A, 12V/3A, 15V/3A, 20V/5A
Type-C1 Output: 5V/3A, 9V/3A, 12V/3A, 15V/3A, 20V/5A
Type-C2 Output: 5V/3A, 9V/2.22A, 12V/1.67A
USB-A Output: 5V/2.4A, 9V/2A, 12V/1.5A
Output: 100W (Total Max)
Dimensions: 67*160*38mm
Weight: 450±10g

HIGH CAPACITY PV POWER BANK

50000mAh & PD 100W

Support Macbook & Laptop & Portable Devices



P213D



P213D-Pro



P213D-PV

SPECS

Model: P213D
Type-C*3 USB-A*3
Capacity: 50000mAh/3.7V 185Wh
Type-C Input: PD 5V/3A, 9V/2.22A, 12V/1.67A
Type-C Output: PD 5V/3A, 9V/2.22A, 12V/1.67A
USB-A Output: QC 5V/2.4A, 9V/2A, 12V/1.5A
Total Output: 60W Max
Dimensions: 144.5*84*84mm
Weight: 1280g±10g

Model: P213D-Pro
Type-C*3 USB-A*2
Capacity: 50000mAh/3.7V 185Wh
Type-C#1 Input: PD 5V/3A, 9V/3A, 12V/3A, 15V/3A, 20V/5A
Type-C#1 Output: PD 5V/3A, 9V/3A, 12V/3A, 15V/3A, 20V/5A
Type-C#2 Output: PD 5V/3A, 9V/2.22A, 12V/1.67A
Type-C#3 Output: PD 5V/3A, 9V/2.22A, 12V/1.67A
USB-A Output: QC 5V/2.4A, 9V/2A, 12V/1.5A
Total Output: 105W Max
Dimensions: 144.5*84*84mm
Weight: 1280g±10g

Model: P213D-PV
Type-C*2 USB-A*1 DC7909*1
Capacity: 50000mAh/3.7V 185Wh
PV/DC Input: 120W Max
Type-C#1 Input: PD 5V/3A, 9V/3A, 12V/3A, 15V/3A, 20V/5A
Type-C#1 Output: PD 5V/3A, 9V/3A, 12V/3A, 15V/3A, 20V/5A
Type-C#2 Output: PD 5V/3A, 9V/2.22A, 12V/1.67A
USB-A Output: QC 5V/2.4A, 9V/2A, 12V/1.5A
Total Output: 120W Max
Dimensions: 144.5*84*84mm
Weight: 1280g±10g



PD ⚡ 3.0

Qualcomm
quick charge 3.0

Qualcomm
quick charge 4+

HIGH CAPACITY PV POWER BANK WITH CAR-PORT

80000mAh & PV120W

Support Macbook & Laptop & Portable Devices



SPECS

Model: P233D

Type-C*2, USB-A*2, DC7909*1, Car Port*1

Capacity: 80000mAh/3.7V 296Wh

Type-C1 Input: 5V/3A, 9V/3A, 12V/3A, 15V/3A, 20V/5A

Type-C1 Output: 5V/3A, 9V/3A, 12V/3A, 15V/3A, 20V/5A

Type-C2 Output: 5V/3A, 9V/2.22A, 12V/1.67A

USB-A1 Output: QC 5V/2.4A, 9V/2A, 12V/1.5A

USB-A2 Output: QC 5V/2.4A, 9V/2A, 12V/1.5A, SCP4.5V/5A

Output: 120W (Total Max)

Car Charger-Output: 120W

Solar / DC-Input: 120W (24V/5A)

Dimensions: 181*107*100mm

Weight: 1800g±10g

PD ⚡ 3.0  Qualcomm quick charge 3.0 



MINI-MAGSAFE POWER BANK

Slim & Soft-touch
Wireless Output 7.5W Max

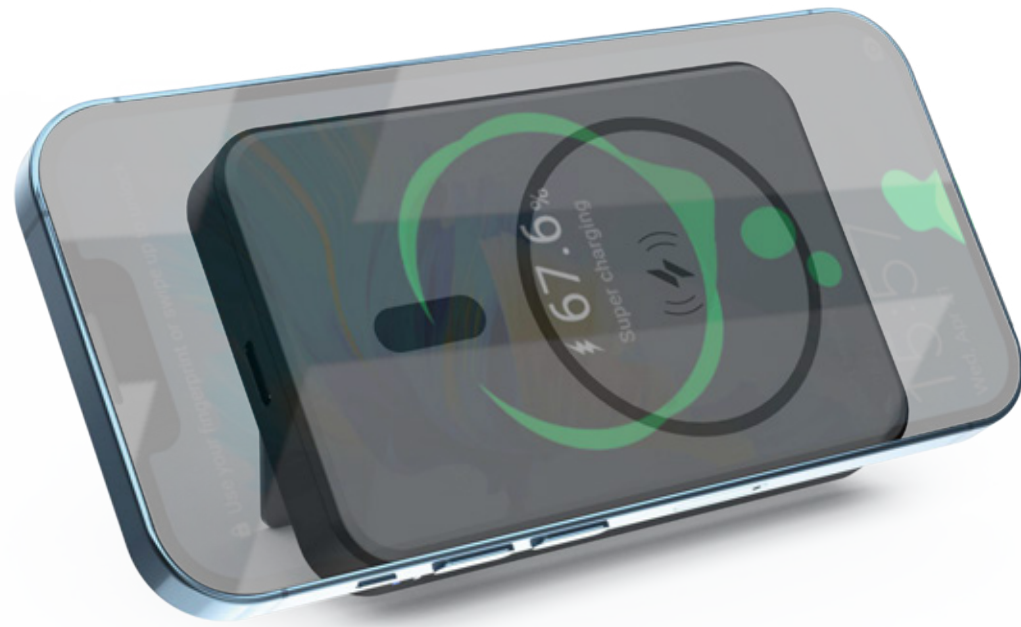


SPECS

Model: P220W5
Type-C*1 Wireless*1
Capacity: 5000mAh/3.7V, 18.5Wh
Type-C Input: 5V/3A, 9V/2A
Type-C Output: 5V/2.4A
Wireless Output: 7.5W
Output: 12W (Max)
Dimensions: 87*60*14mm
Weight: 130±10g

BRACKET TYPE MAGSAFE POWER BANK

Minimal Stand, Hands Free
Wireless Output 7.5w Max



SPECS

Model: P246W5
Type-C*1
Capacity: 5000mAh/3.7V/18.5Wh
Type-C Input: 5V/2A, 9V/1.11A(10W max)
Type-C Output: 5V/2.4A, 9V/1.33A, 12V/1A(12W max)
Wireless Output: 5W/7.5W
Output: 12W (Total Max)
Dimensions: 91*60.5*17.9mm
Weight: 103g±10g



AC POWER BANK

AC Fast Charging
Total Output 20W Max



SPECS

Model: P247D
Type-C*1, USB-A*1, AC*1
Capacity: 10000mAh/3.7V/37Wh
AC Input: 100~240V, 50/60Hz, 0.8A
Type-C Output: 5V/3A, 9V/2.22A, 12V/1.67A(20W max)
USB-A Output: 5V/2.4A, 9V/2.2A, 12V/1.5A
Output: 15W (Total Max)
Dimensions: 129.5*66.8*24.2mm
Weight: 246g±10g

PD 3.0  Qualcomm quick charge 3.0

PORTABLE POWER BANK

20W Type-c Output Max



SPECS

Model: P248D

Type-C*1

Capacity: 5000mAh/3.62V/18.1Wh

Type-C Input: 5/3A, 9V/2A, 12/1.5A

Type-C Output: 5V/3A, 5V/4.5A, 4.5V/5A, 9V/2.22A, 12V/1.67A

Dimensions: 75*36.5*26mm

Weight: 85g±10g



MINI-COLORFUL POWER BANK SERIES

P227A 5000mAh
 P228A/P228D 10000mAh
 P229A/P229D 20000mAh



P227A



P228A/P228D



P229A/P229D



SPECS

Model: P227A
 Type-C*1
 Capacity: 5000mAh/3.7V, 18.5Wh
 Type-C Input: 5V/2.4A
 Type-C Output: 5V/2.4A
 Output: 12W (Max)
 Dimensions: 85*62*13.2mm
 Weight: 103±10g

Model: P228A
 Type-C*2
 Capacity 10000mAh/3.7V, 37Wh
 Type-C#1 Input: 5V/3A
 Type-C#1 Output: 5V/3A
 Type-C#2 Output: 5V/3A
 Output: 15W (Max)
 Dimensions: 85*63.2*23.7mm
 Weight: 190±10g

Model: P228D
 Type-C*2
 Capacity 10000mAh/3.7V, 37Wh
 Type-C #1 Input: 5V/3A, 9V/2A, 12V/1.5A
 Type-C#1 Output: 5V/3A, 9V/2.22A, 12V/1.67A
 Type-C#2 Output: 5V/3A, 9V/2.22A, 12V/1.67A
 Output: 20W (Max)
 Dimensions: 85*63.2*23.7mm
 Weight: 190±10g

Model: P229A
 Type-C*2
 Capacity 20000mAh/3.7V, 74Wh
 Type-C#1 Input: 5V/3A
 Type-C#1 Output: 5V/3A
 Type-C#2 Output: 5V/3A
 Output: 15W (Max)
 Dimensions: 131.5*68*27.8mm
 Weight: 374±10g

Model: P229D
 Type-C*2
 Capacity 20000mAh/3.7V, 74Wh
 Type-C#1 Input: 5V/3A, 9V/2A, 12V/1.5A
 Type-C#1 Output: 5V/3A, 9V/2.22A, 12V/1.67A
 Type-C#2 Output: 5V/3A, 9V/2.22A, 12V/1.67A
 Output: 20W (Max)
 Dimensions: 131.5*68*27.8mm
 Weight: 374±10g

MINI-BUILT-IN CABLE POWER BANK SERIES

P230A 5000mAh
P231A/P231D 10000mAh
P232A/P232D 20000mAh



P230A



P231A/P231D



P232A/P232D

SPECS

Model: P230A
Type-C*2
Capacity: 5000mAh/3.7V, 18.5Wh
Type-C 1 Input:5V/2.4A
Type-C 1 Output:5V/2.4A
Type-C 2 Output:5V/2.4A
Output: 12W (Max)
Dimensions: 90.2*61.4*13mm
Weight: 105±10g

Model: P231A
Type-C*2
Capacity 10000mAh/3.7V, 37Wh
Type-C#1 Input: 5V/3A
Type-C#1 Output: 5V/3A
Type-C#2 Output: 5V/3A
Output: 15W (Max)
Dimensions: 90*63.2*23.3mm
Weight: 200±10g

Model: P231D
Type-C*2
Capacity 10000mAh/3.7V, 37Wh
Type-C #1 Input: 5V/3A, 9V/2A, 12V/1.5A
Type-C#1 Output: 5V/3A, 9V/2.22A, 12V/1.67A
Type-C#2 Output: 5V/3A, 9V/2.22A, 12V/1.67A
Output: 20W (Max)
Dimensions: 90*63.2*23.3mm
Weight: 200±10g

Model: P232A
Type-C*2
Capacity 20000mAh/3.7V, 74Wh
Type-C#1 Input: 5V/3A
Type-C#1 Output: 5V/3A
Type-C#2 Output: 5V/3A
Output: 15W (Max)
Dimensions: 136.5*68*27.8mm
Weight: 385±10g

Model: P232D
Type-C*2
Capacity 20000mAh/3.7V, 74Wh
Type-C#1 Input: 5V/3A, 9V/2A, 12V/1.5A
Type-C#1 Output: 5V/3A, 9V/2.22A, 12V/1.67A
Type-C#2 Output: 5V/3A, 9V/2.22A, 12V/1.67A
Output: 20W (Max)
Dimensions: 136.5*68*27.8mm
Weight: 385±10g



MINI-LEATHER POWER BANK SERIES

P221A	5000mAh
P222A/P222D	10000mAh
P223A/P223D	20000mAh

SPECS

Model: P221A
Type-C*1
Capacity: 5000mAh/3.7V, 18.5Wh
Type-C Input: 5V/2.4A
Type-C Output: 5V/2.4A
Output: 12W (Max)
Dimensions: 85*60.5*12.9mm
Weight: 103±10g

Model: P222A
Type-C*2
Capacity 10000mAh/3.7V, 37Wh
Type-C#1 Input: 5V/3A
Type-C#1 Output: 5V/3A
Type-C#2 Output: 5V/3A
Output: 15W (Max)
Dimensions: 85*61.8*23.2mm
Weight: 194±10g

Model: P222D
Type-C*2
Capacity 10000mAh/3.7V, 37Wh
Type-C #1 Input: 5V/3A, 9V/2A, 12V/1.5A
Type-C#1 Output: 5V/3A, 9V/2.22A, 12V/1.67A
Type-C#2 Output: 5V/3A, 9V/2.22A, 12V/1.67A
Output: 20W (Max)
Dimensions: 85*61.8*23.2mm
Weight: 194±10g

Model: P223A
Type-C*2
Capacity 20000mAh/3.7V, 74Wh
Type-C#1 Input: 5V/3A
Type-C#1 Output: 5V/3A
Type-C#2 Output: 5V/3A
Output: 15W (Max)
Dimensions: 121.5*66*27.2mm
Weight: 378±10g

Model: P223D
Type-C*2
Capacity 20000mAh/3.7V, 74Wh
Type-C#1 Input: 5V/3A, 9V/2A, 12V/1.5A
Type-C#1 Output: 5V/3A, 9V/2.22A, 12V/1.67A
Type-C#2 Output: 5V/3A, 9V/2.22A, 12V/1.67A
Output: 20W (Max)
Dimensions: 121.5*66*27.2mm
Weight: 378±10g

LASER TEXTURING POWER BANK SERIES

P174/P174A/P174D 10000mAh

P175/P175A/P175D 20000mAh



P174/P174A/P174D



P175/P175A/P175D

PD 3.0  Qualcomm quick charge 3.0



Laser Texturing Power Bank

10000mAh Li-Polymer



SPECS

Model: P174
 USB-A*2 Type-C*1 Micro*1
 Capacity: 10000mAh/3.7V, 37Wh
 Type-C Input/Output: 5V/2A
 USB-A Output: 5V/2.4A
 Micro USB Input: 5V/2A
 Output: 12W (Max)
 Size: 132*68*15.7mm
 Weight: 215g

Model: P174A
 USB-A*1 Type-C*1 Micro*1
 Capacity: 10000mAh/3.7V, 37Wh
 Type-C Input/Output: 5V/3A
 Micro USB Input: 5V/2A
 USB-A Output: 5V/2.4A
 Output: 15W (Max)
 Size: 132*68*15.7mm
 Weight: 215g

Model: P174D
 USB-A*1 Type-C*1 Micro*1
 Capacity: 10000mAh/3.7V, 37Wh
 Type-C Input/Output: 5V/3A, 9V/2.2A, 12V/1.67A
 Micro USB Input: 5V/2A, 9V/2A, 12V/1.5A
 USB-A Output: 5V/2.4A, 9V/2A, 12V/1.5A
 Output: 20W (Max)
 Size: 132*68*15.7mm
 Weight: 215g





Laser Texturing Power Bank

20000mAh Li-Polymer



SPECS

Model: P175
USB-A*2 Type-C*1 Micro*1
Capacity: 20000mAh/3.7V, 74Wh
Type-C Input: 5V/2A
USB-A Output: 5V/2.4A
Micro USB Input: 5V/2A
Output: 12W (Max)
Size: 135*74*27.6mm
Weight:385g

Model: P175A
USB-A*1 Type-C*1 Micro*1
Capacity: 20000mAh/3.7V, 74Wh
Type-C Input/Output: 5V/3A
Micro USB Input: 5V/2A
USB-A Output: 5V/2.4A
Output: 15W (Max)
Size: 135*74*27.6mm
Weight:385g

Model: P175D
USB-A*1 Type-C*1 Micro*1
Capacity: 20000mAh/3.7V, 74Wh
Type-C Input/Output: 5V/3A, 9V/2.22A, 12V/1.67A
Micro USB Input: 5V/2A, 9V/2A, 12V/1.5A
USB-A Output: 5V/2.4A, 9V/2A, 12V/1.5A
Output: 20W (Max)
Size: 135*74*27.6mm
Weight:385g

PD 3.0  Quick Charge 3.0

FABRIC POWER BANK SERIES

P176A/P176D 10000mAh

P177A/P177D 20000mAh



P176A/P176D

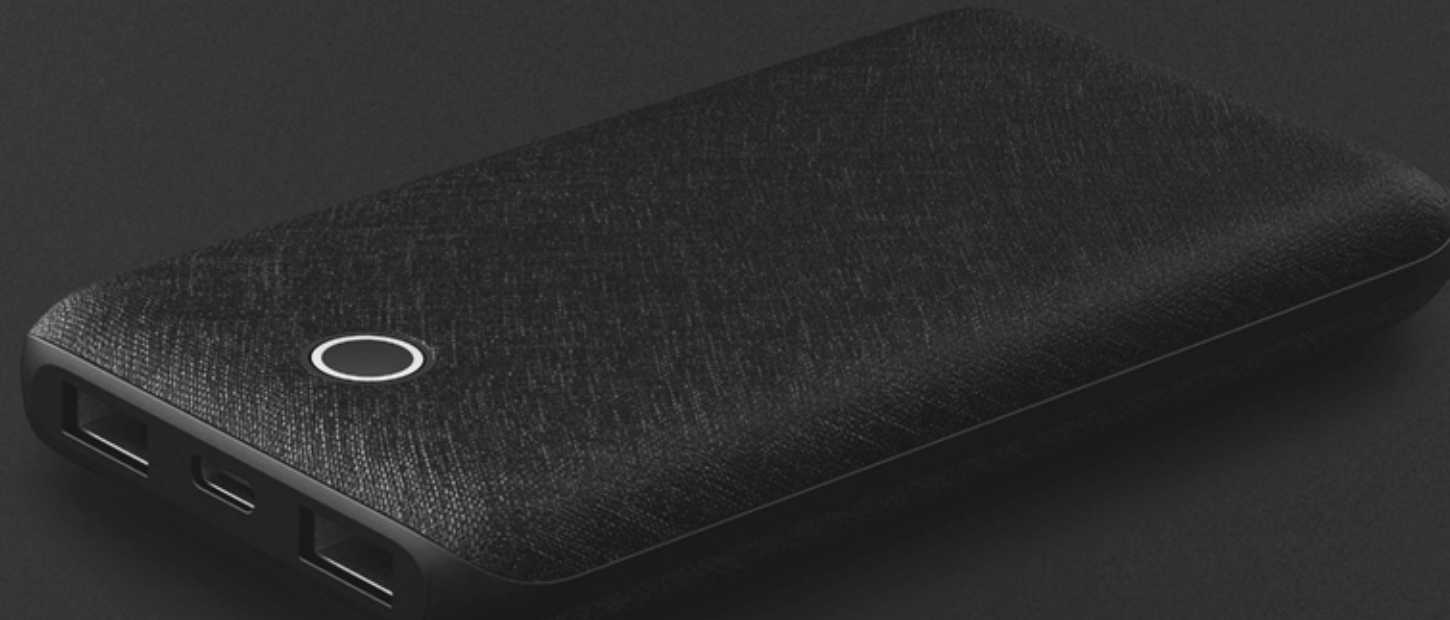


P177A/P177D

PD 3.0  Qualcomm quick charge 3.0

FABRIC POWER BANK WITH USB-C IN&OUT

10000/20000mAh Li-Polymer
Double-sided Leather/Fabric



PD ⚡ 3.0  Qualcomm quick charge 3.0

SPECS

Model: P176A

USB-A*2 Type-C*1

Capacity: 10000mAh/3.7V, 37Wh

Type-C Input/Output: 5V/3A

USB-A Output: 5V/2.4A

Output: 15W (Max)

Dimensions: 133.5*70*16.8mm

Weight: 215g

Model: P176D

USB-A*2 Type-C*1

Capacity: 10000mAh/3.7V, 37Wh

Type-C Input/Output: 5V/3A, 9V/2.2A, 12V/1.67A

USB-A Output: 5V/2.4A, 9V/2A, 12V/1.5A

Output: 20W (Max)

Dimensions: 133.5*70*16.8mm

Weight: 215g

Model: P177A

USB-A*2 Type-C*1

Capacity: 20000mAh/3.7V, 74Wh

Type-C Input/Output: 5V/3A

USB-A Output: 5V/2.4A

Output: 15W (Max)

Dimensions: 136*74*28.5mm

Weight: 380g

Model: P177D

USB-A*2 Type-C*1

Capacity: 20000mAh/3.7V, 74Wh

Type-C Input/Output: 5V/3A, 9V/2.22A, 12V/1.67A

USB-A Output: 5V/2.4A, 9V/2A, 12V/1.5A

Output: 20W (Max)

Dimensions: 136*74*28.5mm

Weight: 380g

PD 65W/45W & QC 27W TEXTURING POWER STATION SERIES

H35D 15000mAh

H45D 20000mAh



H35D



H45D

PD ⚡ 3.0

⚡ Qualcomm quick charge 3.0

⚡ Qualcomm quick charge 4+

PD 3.0 Qualcomm quick charge 3.0 Qualcomm quick charge 4+



PD 65W & QC 27W Texturing Power Station Series

15000mAh Li-Polymer 45W (Max)

20000mAh Li-Polymer 65W (Max)

Support Macbook & Laptop & Portable Devices



SPECS

Model: H35D

USB-A*1 Type-C*1

Capacity: 15000mAh

Type-C Input: PD 5V/3A, 9V/3A, 12V/3A, 15V/3A, 20V/2.25A

Type-C Output: PD 5V/3A, 9V/3A, 12V/3A, 15V/3A, 20V/2.25A

USB-A Output: QC 5V/3A, 9V/3A, 12V/2.25A

Output: 45W (Max)

Dimensions: 149*75*20.5mm

Weight: 330±10g

Model: H45D

USB-A*1 Type-C*1

Capacity: 20000mAh

Type-C Input: PD 5V/3A, 9V/3A, 12V/3A, 15V/3A, 20V/3.25A

Type-C Output: PD 5V/3A, 9V/3A, 12V/3A, 15V/3A, 20V/3.25A

USB-A Output: QC 5V/3A, 9V/3A, 12V/2.25A

Output: 65W (Max)

Dimensions: 152*77*25.8mm

Weight: 440±10g

PD 65W/45W & QC 27W FABRIC POWER STATION SERIES

H35D-1 15000mAh

H45D-1 20000mAh





H45D-1



H35D-1

PD 3.0  Qualcomm quick charge 3.0  Qualcomm quick charge 4+

PD ⚡ 3.0  Qualcomm quick charge 3.0  Qualcomm quick charge 4+



PD 45W & QC 27W Fabric Power Station

15000mAh Li-Polymer 45W (Max)
20000mAh Li-Polymer 65W (Max)
Support Macbook & Laptop & Portable Devices



SPECS

Model: H35D-1
USB-A*1 Type-C*1
Capacity: 15000mAh
Type-C Input: PD 5V/3A, 9V/3A, 12V/3A, 15V/3A, 20V/2.25A
Type-C Output: PD 5V/3A, 9V/3A, 12V/3A, 15V/3A, 20V/2.25A
USB-A Output: QC 5V/3A, 9V/3A, 12V/2.25A
Output: 45W (Max)
Dimensions: 149*75*21.5mm
Weight: 330±10g

Model: H45D-1
USB-A*1 Type-C*1
Capacity: 20000mAh
Type-C Input: PD 5V/3A, 9V/3A, 12V/3A, 15V/3A, 20V/3.25A
Type-C Output: PD 5V/3A, 9V/3A, 12V/3A, 15V/3A, 20V/3.25A
USB-A Output: QC 5V/3A, 9V/3, 12V/2.25A
Output: 65W (Max)
Dimensions: 152*77*28mm
Weight: 430±10g

OUTDOOR FOLDABLE SOLAR CHARGER

S30 32W Max Output



SPECS

Model: S30

Type-C*1 USB-A*2

Type-C Output: 5V/3A, 9V/3A, 12V/2.5A 15V/2A

USB-A Output: 5V/2.4A

Output:32W(Max)

Dimensions: 204*280mm (Folded) 816.5*280mm(Unfolded)